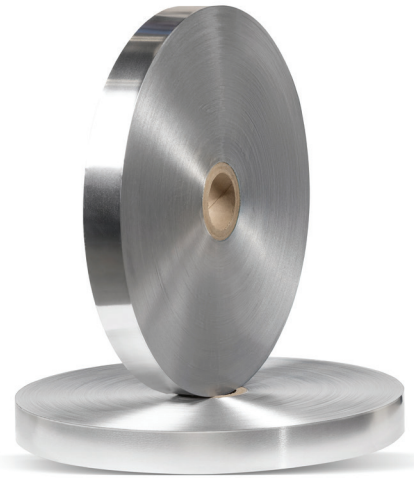


# COPOLYMER COATED ALUMINUM TAPE

Plastic clad metal consists of an aluminum tape coated on one side or both sides with an adherent ethylene-acrylic acid copolymer (EAA). The copolymer exhibits excellent adhesion to the aluminum substrate.

1. **ALLOY:** AA1050, AA1060
2. **Appearance:** Straight, smooth, even, free from inclusions, creases, spots.



| ITEM   | UNIT                   | INDEX                      | TOLERANCE                 |           |
|--|------------------------|----------------------------|---------------------------|-----------|
| <b>Length</b>  | m                      | 1000-4100                  | +/- 50                    |           |
| <b>Width</b>   | mm                     | 12-610                     | +/- 0.5                   |           |
| <b>Thickness</b>                                     | <b>AL</b>              | mm                         | 0.10/ 0.15/ 0.20/ 0.30    | +/- 0.010 |
|  | <b>Copolymer (EAA)</b> | mm                         | 0.058                     | +/- 0.013 |
|  | <b>Total Thickness</b> | mm                         | 0.160/ 0.210/ 0.26/ 0.360 | +/- 0.015 |
| <b>Tensile Strength</b>                              | MPA                    | ≥75                        |                           |           |
| <b>Elongation At Break</b>                           | %                      | ≥15                        |                           |           |
| <b>Peel Strength Between AI And Plastic Coating</b>  | N/cm                   | ≥6.13                      |                           |           |
| <b>Heat Seal Strength</b>                            | N/cm                   | ≥17.5                      |                           |           |
| <b>Water Resistance 68+/-1°C, 168h Peel Strength</b> | N/cm                   | ≥6.13                      |                           |           |
| <b>Filler/Floodant Resistance 68+/-1°C, 168 h</b>    | -                      | No Bubble, Or Delamination |                           |           |
| <b>Dielectric Strength DC 1KV, 1min</b>              | -                      | No Breaking                |                           |           |
| <b>Corrosion Resistance 0.1mol/L, HCl, 480h</b>      | Grade                  | 7                          |                           |           |